

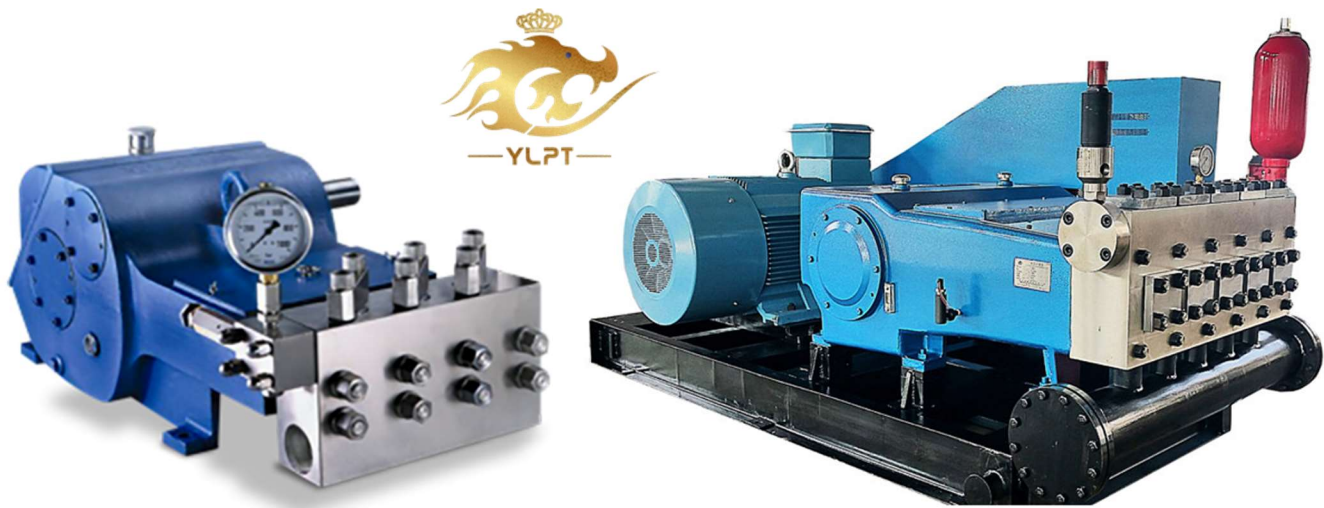
# AFROVEN

## PUMPS & SYSTEMS

### HIGH PRESSURE PUMPS & PACKAGES

### API 674 COMPLIANT

**AFROVEN** is the sole distributor for **M/s. NANJING YALONG** the leading API 674 Pumps Manufacture in Asia for Positive Displacement Plunger Pumps, TRIPLEX and QUNITUPLEX, driven by Electric Motor or Diesel Engine for several applications



#### TRIPLEX PUMPS

##### SPECIFICATIONS:

- ☐ Number of Plungers: 3 or 5
- ☐ Stroke Length: 2.5" ~ 5"
- ☐ Pressure Range: 5,00 ~ 40,000 PSI
- ☐ Flow Range: 0.2 ~ 1,319.7 GPM
- ☐ Horsepower: Up to 1,000 HP
- ☐ Plunger Size: up to 4 1/2"

#### QUINTUPLEX PUMPS

##### APPLICATIONS:

- ☐ High Pressure Pumping Applications
- ☐ Salt water disposal
- ☐ Pressure Testing / Hydrostatic Testing
- ☐ Chemical Injection
- ☐ Boiler Feedwater
- ☐ Methanol Injection

# AFROVEN

## PUMPS & SYSTEMS

### CO2 INJECTION PLUNGER PUMP SKIDS

Manufactured by our Principal M/s. NANJING YALONG; We Inject Liquid CO<sub>2</sub> as a solvent for various applications in Chemical, Pharmaceutical, Food industries for different cleaning and extraction processes.



#### OUR CO2 PUMPS ADVANTAGES:

- ☐ Max Pressure: 120 MPa
- ☐ Low Noise
- ☐ Easy Operation
- ☐ High Efficiency
- ☐ Max Flow: 250m<sup>3</sup>/h
- ☐ Compact Design
- ☐ Easy Maintenance
- ☐ Low Coefficient of Air Lock



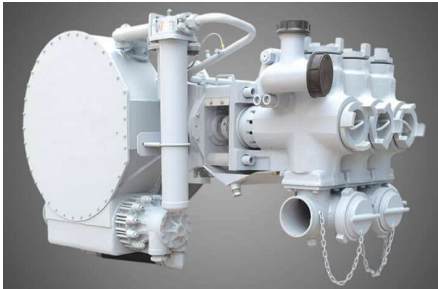


# AFROVEN

## PUMPS & SYSTEMS

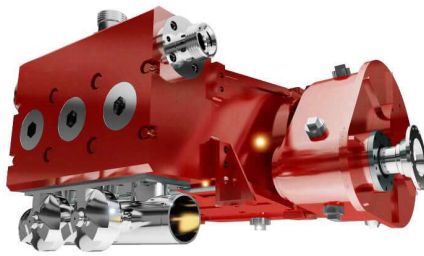
### Full Frac Pumps Services

**AFROVEN** Provide High-Quality Well Service Aftermarket Pumps and Parts for Hydraulic Fracturing and Downhole Drilling of all major Pump makers including Weir SPM, Gardner Denver, FMC, Halliburton, OPI and all our products are 100% interchangeable with these Original makes with our warranty for Applications such as Acidizing, Cementing, Gravel Packing, Snubbing and Fracturing



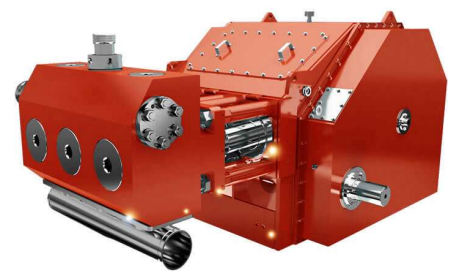
**AFV-HT400 Well Service Pump**

Equivalent to Halliburton HT400 Pump.  
Stroke length: 8"  
BHP: 600 HP (447 KW)  
Maxim Input Torque: 9,782 Nm  
Gear Ratio: 8.6:1  
Pump Weight: 6,500 lbs  
Sizes: 3 3/8", 4", 4.5" & 5"



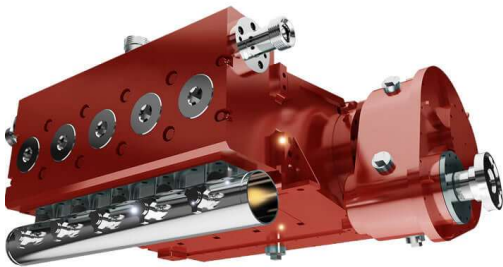
**AFV600 Well Service Pump**

Equivalent to SJS, SPM, SERVA TWS600  
Stroke Length: 6"  
BHP: 600 HP (447 KW)  
Maxim Rod Load: 100,000 lbs  
Gear Ratio: 4.61:1  
Pump Weight: 4,940 lbs  
Sizes: 2 1/2", 2 3/4", 3", 3 1/2", 4" & 4 1/2"



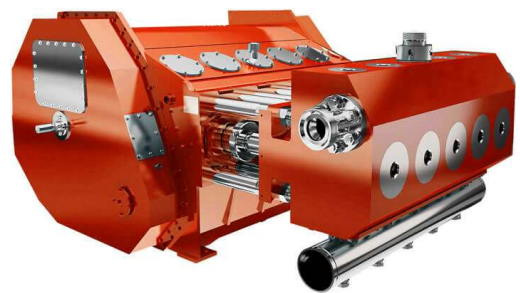
**AFV2250 Frac Pump**

Equivalent to SPM, TWS (2000 & 2250)  
Stroke: 8"  
BHP: 2,250 HP (1,678 KW)  
Maxim Rod Load: 238,570 lbs  
Gear Ratio: 6.353:1  
Pump Weight: 11,000 lbs  
Sizes: 3 3/4", 4", 4 1/2", 5", 5 1/2" & 5 3/4"



**AFV1000 Well Service Pump**

Equivalent to SPM QUINTUPLEX 1000 HP Pump  
Stroke: 8"  
BHP: 1,000 HP (746 KW)  
Maxim Rod Load: 100,000 lbs  
Gear Ratio: 4.610:1  
Pump Weight: 7040 lbs approx.  
Sizes: 2 1/2", 2 3/4", 3", 3 1/2", 4" & 4 1/2"



**AFV2500 Frac Pump**

Equivalent to SPM / GD QWS 2500  
Stroke: 8"  
BHP: 2,500 HP (1,864 KW)  
Maxim Rod Load: 225,000 lbs  
Gear Ratio: 6.353:1  
Pump Weight: 16,000 lbs  
Sizes: 4", 4 1/2" & 5"

# AFROVEN

## PUMPS & SYSTEMS

### FIRE PUMPS - UL, FM, NFPA-20

**Dynapro Pumps** manufacture and package a complete lines of superior quality Fire Fighting Pump Packages, Diesel & Electric Motor Driven, Jockey Pumps and the Controllers. Pumps are API610 Standard, NFPA 20 (National Fire Protection Association), UL Listed and FM Approved for a minimum service life of 20 years, ratings up to 10,000 GPM and up to 25 BAR Discharge Pressure



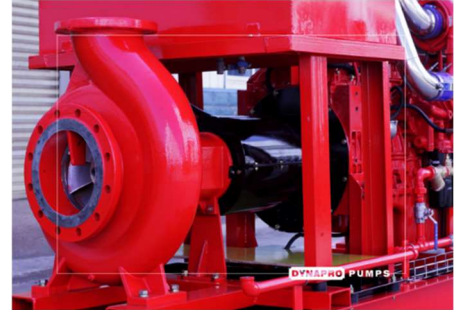
**Vertical Turbine Fire Pumps**

NFPA 20, API 610, ASME.  
UL Listed / FM Approved.  
Motor Driven or Diesel Driven.  
UL Listed / FM Approved Control Panel  
Flowrate: 500 ~ 10,000 GPM  
Pressure: 25 barg.



**Horizontal Split Case Fire Pumps**

NFPA 20, API 610, ASME.  
UL Listed / FM Approved.  
Motor Driven or Diesel Driven.  
UL Listed / FM Approved Control Panel  
Flowrate: 500 ~ 10,000 GPM.  
Pressure: 25 barg.



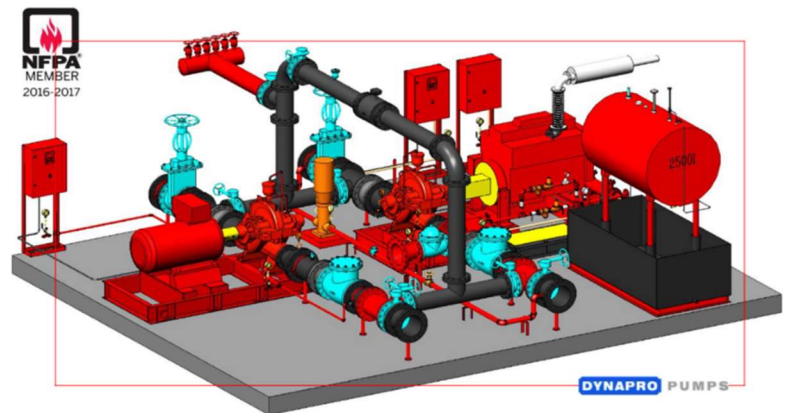
**End Suction Fire Pumps**

NFPA 20, ISO, ASME.  
UL Listed / FM Approved.  
Motor Driven or Diesel Driven.  
UL Listed / FM Approved Control Panel  
Flowrate: 100 ~ 750 GPM  
Pressure: 15 barg.

### Jockey Pumps

Designed to maintain the pressure on the fire protection system when the system is not flowing water, Centrifugal Pump Type and controlled by UL Listed / FM controller.

Jockey Pump capacity should be minimum of 1% of the Fire Pump capacity and the Discharge Pressure shall be greater than the Discharge Pressure of main fire pumps by minimum of **10 PSI** to avoid a false starting of main fire pump.





## CHEMICAL INJECTION PUMPS

### API 675 COMPLIANT



#### Dose Series Metering Pump

- ❑ Typical Dosing Pumps
- ❑ Flow rate: 2 ~ 5,500 L/h
- ❑ Discharge Pressure: 1,380 Bar
- ❑ Stability accuracy:  $\pm 2\%$
- ❑ MOC: PVC; PVDF; 316SS
- ❑ Self-cleaning check valve structure
- ❑ Pulsation Impact
- ❑ Harsh operating conditions



#### Power Series Diaphragm Pump

- ❑ Typical Dosing Pumps
- ❑ Turndown Ratio: 10:1
- ❑ Max. viscosity: up to 1200Cp
- ❑ Electric Stroke Controller
- ❑ Minimum adjustment scale is 1%
- ❑ Power Supply: 220-380V; 50/60Hz; 1/3PH
- ❑ Robust structure design
- ❑ Manual Adjustment Option



# AFROVEN

## PUMPS & SYSTEMS



**STF/STK**

Max Flow rate: 80L/H

Max Pressure: 16bar



**MB**

Max Flow rate: 500L/H

Max Pressure: 10bar



**E**

Max Flow rate: 126L/H

Max Pressure: 125bar



**EV**

Max Flow rate: 334L/H

Max Pressure: 160bar



**HE**

Max Flow rate: 2500L/H

Max Pressure: 300bar



**HK**

Max Flow rate: 8600L/H

Max Pressure: 300bar



**MC/M**

Max Flow rate: 2500/5500L/H

Max Pressure: 10bar



**HG**

Max Flow Rate: 4400L/H

Max Pressure: 300bar



## CHEMICAL INJECTION PACKAGES



**AfroVen Pumps** are specialized in all types of Chemical Injection Packages, it combines various equipment to dose chemical fluid into a process line and being manufactured according to the customer's process and control requirement.

### TYPE OF CHEMICAL INJECTION PACKAGES:

- ☐ Conventional Chemical Injection Packages
- ☐ Multi Point Chemical Injection Packages
- ☐ Multi Compartmental Tank Packages
- ☐ Solar Powered Chemical Injection Packages

### TYPICAL APPLICATIONS:

- ☐ Oil & Gas, Petro-chemical and Chemical
- ☐ Municipal water treatment and waste-water treatment
- ☐ Flocculant dosing
- ☐ NaClO dosing
- ☐ Acid and Alkaline dosing for adjusting pH
- ☐ CO2 injection
- ☐ Boiler water treatment in power plant
- ☐ Alkaline, Polymer, Surfactant
- ☐ Phosphate dosing
- ☐ Hydrazine dosing
- ☐ Ammonia dosing
- ☐ Deoxidizer dosing
- ☐ Methanol, Ethylene glycol and Ammonia injection
- ☐ Corrosion inhibitor, Scale inhibitor, Inhibitor injection
- ☐ Defoamer, Demulsifier, Anti-microbial agent
- ☐ Wastewater treatment for oil extraction

# AFROVEN

## PUMPS & SYSTEMS

### CHEMICAL INJECTION PACKAGES SOLAR POWERED

#### SOLAR POWERED CHEMICAL INJECTION SYSTEM SUPPLIED WITH:

- Solar Pump Single Head
- Pump and Charge Controller
- 1x Deep Cycle 12VDC 100AH Battery
- Aluminium Battery Box
- Solar Panel, 12VDC 130W
- Solar Panel Stand with mounting hardware
- Customized Tank

#### ADVANTAGES:

- AFROVEN Solar Pumps are available in Single or Double Head
- Pump Controller to precisely control your injection rates.
- Maximum Pressure: 6,000 PSI / 400 Bar
- Plunger Sizes: 3/16", 1/4", 3/8", 1/2"
- Output GPD/LPD: 200+/750+
- Power: 12 Volt DC
- Available in Explosion Proof Class I Div II



### Custom Chemical Injection Packages

AFROVEN has the capability to fully customize your chemical injection package to fit your needs from a standard pump package to multiple pump systems. AFROVEN offers the right pump and array of power to fit your needs. Please contact us.







## ANSI PROCESS CENTRIFUGAL PUMPS



### AFROVEN-D is built to ANSI B73.1M

Afroven-D Series can utilize any of your existing Durco / Goulds parts' inventory. Our pump is built to ANSI B73.1M, and is available in most metallurgies—in some cases, even Titanium. Our large inventory allows for fast turns—especially on Carbon Steel, 316SS or Cd4MCu, our largest sellers.

#### OFFERS AS STANDARD:

- ☐ Reverse Vane Impellers
- ☐ Solid or Sleeved Shafts
- ☐ Bearing Isolators
- ☐ Selection of Seal Chambers

#### TYPICAL APPLICATIONS:

The most common application of these process pumps are transferring fluids, including alcohol, water, and many other fluids that are less aggressive. Based on the type of impeller used, these pumps have the capability to move fluids with or without solids. The following are some most common industries that use the ANSI process pumps on a large scale:

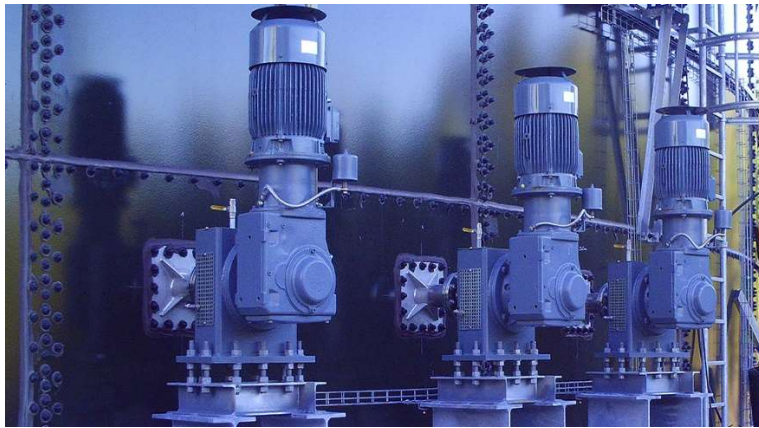
- ☐ Food Processing
- ☐ Chemical Applications
- ☐ Oil Refinery
- ☐ Ethanol Production Facilities
- ☐ General Manufacturing
- ☐ Petrochemical
- ☐ Pulp and Paper
- ☐ Pharmaceuticals
- ☐ Paint
- ☐ Effluent Treatment Plant
- ☐ Food Plant
- ☐ Waste and Wastewater Treatment plant

# AFROVEN

## PUMPS & SYSTEMS

## Mixers & Agitators

AFROVEN do represent **Future Engineering AB** develops, manufactures, and supplies the appropriate mixing solutions for waste water and biological waste plants; **Future Engineering AB** are specializing in the design of custom-made Mixers, Agitators and Steel Tanks of various sizes, either welded or bolted.



**FUTURE ENGINEERING** provides High-efficiency **Super-max-flow Impeller** with the following operational advantages:

- Low glide number along the entire blade surface
- High pumping capacity
- Up to 30% lower energy consumption
- Insensitivity to viscosity variations
- Low installation costs
- Peak technology for biogas reactors including swim layer breaking equipment

**FUTURE ENGINEERING**  
WE ARE DESIGNING FOR THE DAY AFTER TOMORROW

**Wetted Parts** are available in Carbon Steel, Stainless Steel, Acid Proof Steel, and in many other alloys. In certain applications, wetted parts are coated with Teflon, PVC, Haler, PVDF or in other materials based on the application and customer requirements.